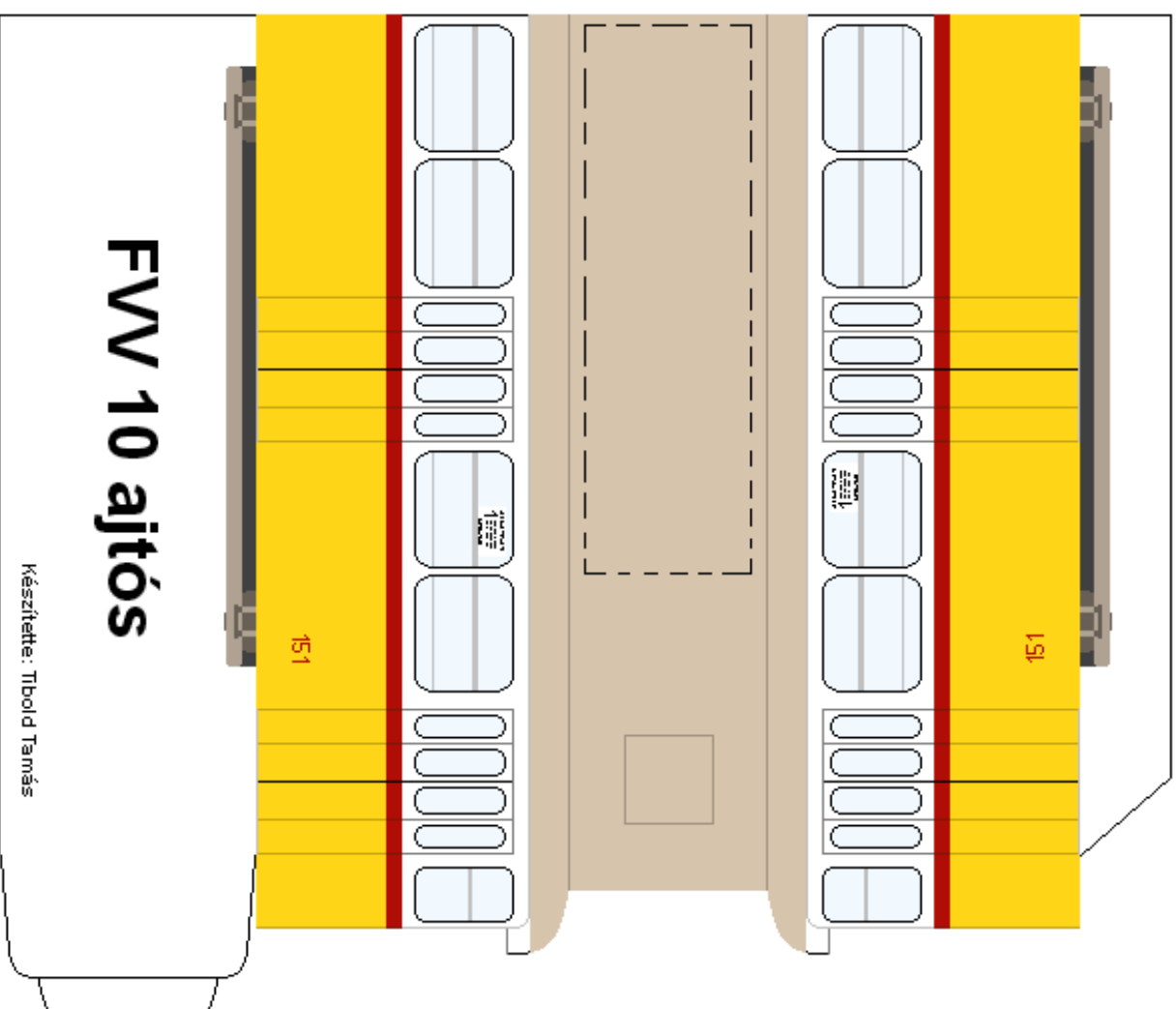
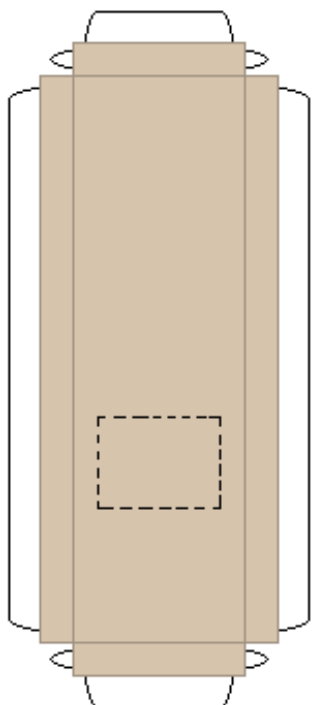


A csatlást ragaszd a villamos
elején levő fekete kis négyzetre!

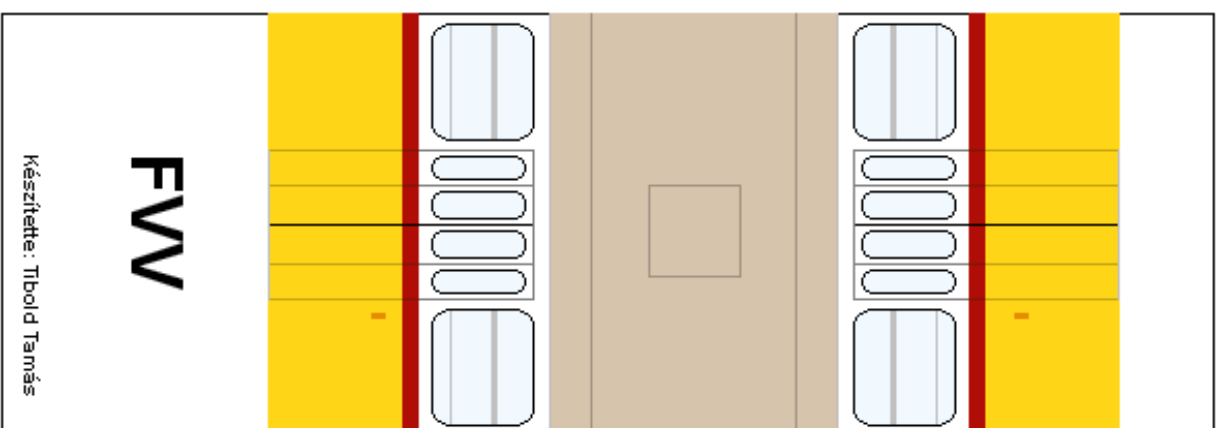
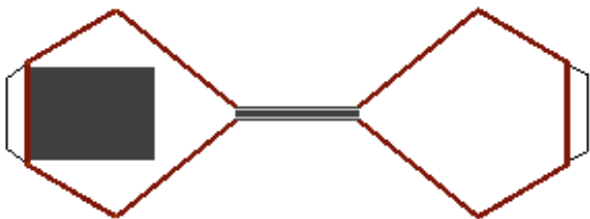
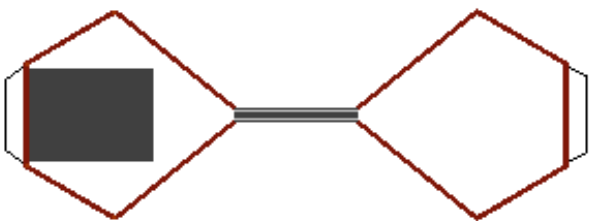
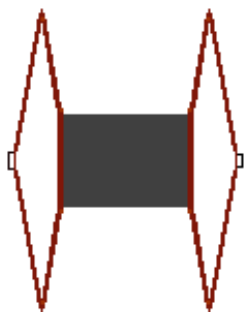
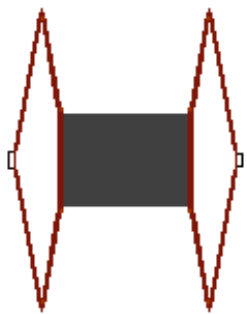


A tükröket ragaszd a helyükre!

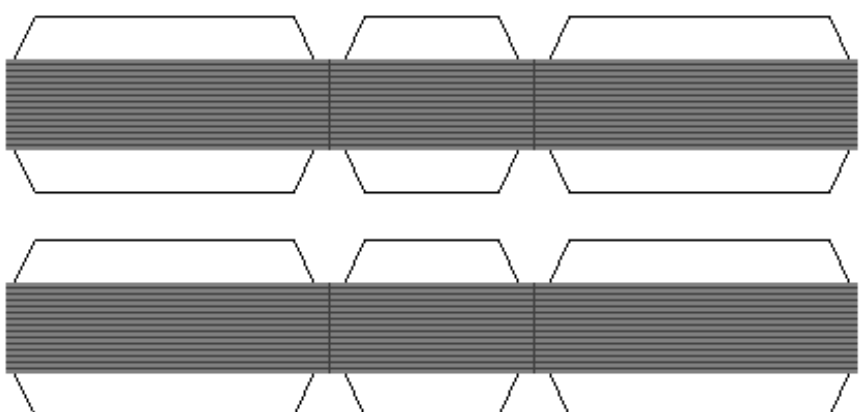


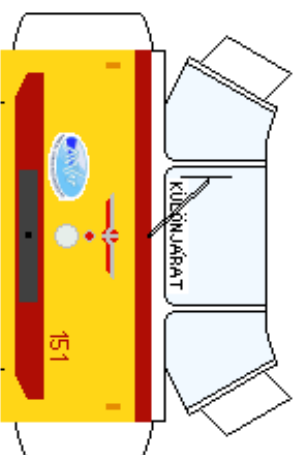
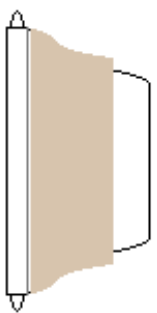


Az ellenállás tartót ragaszd az első villamoson levő szaggatott vonalra!
A szedőket pedig, a ragasztási tanácsok szerint, az ellenállástartón levő szaggatott vonalra!



Készítette: Tibold Tamás





A csatlást ragaszd a villamos
elején levő fekete kis négyzetre!



A tükröket ragaszd a helyükre!

