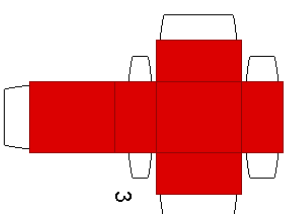
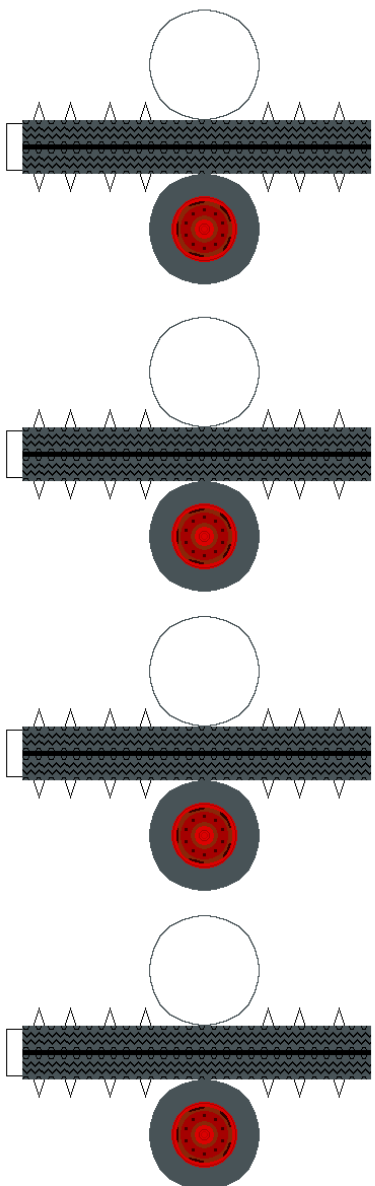
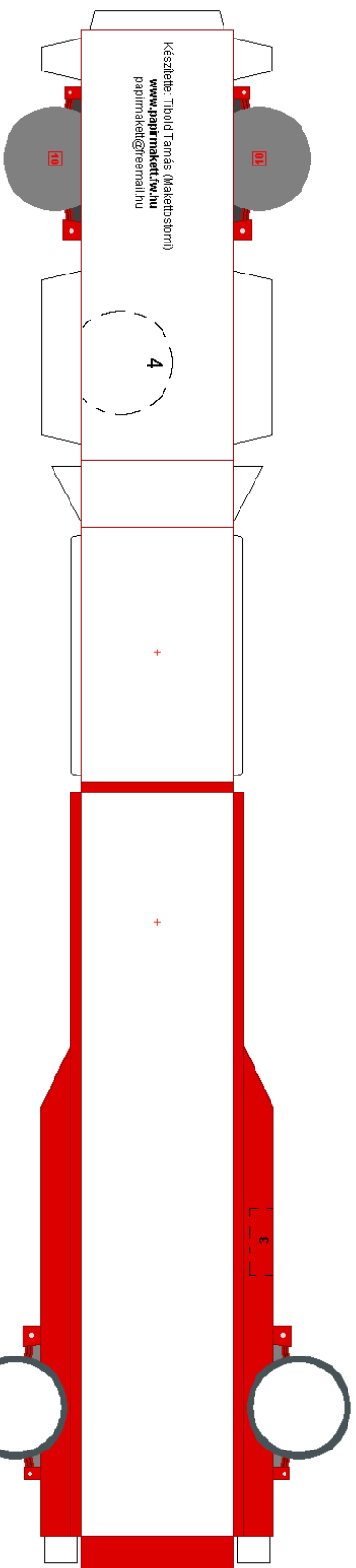
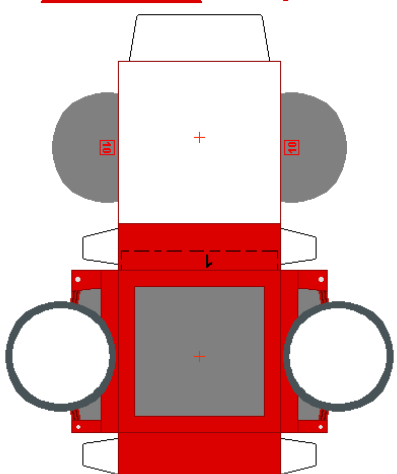
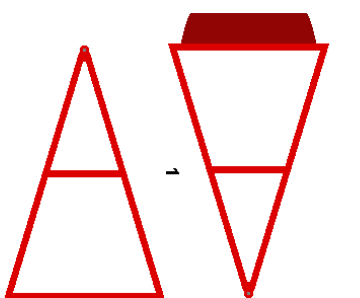


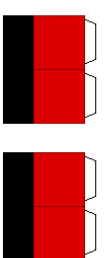


4 pótkerek

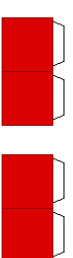


3

Sarvédék



A hátsó tengely mögél

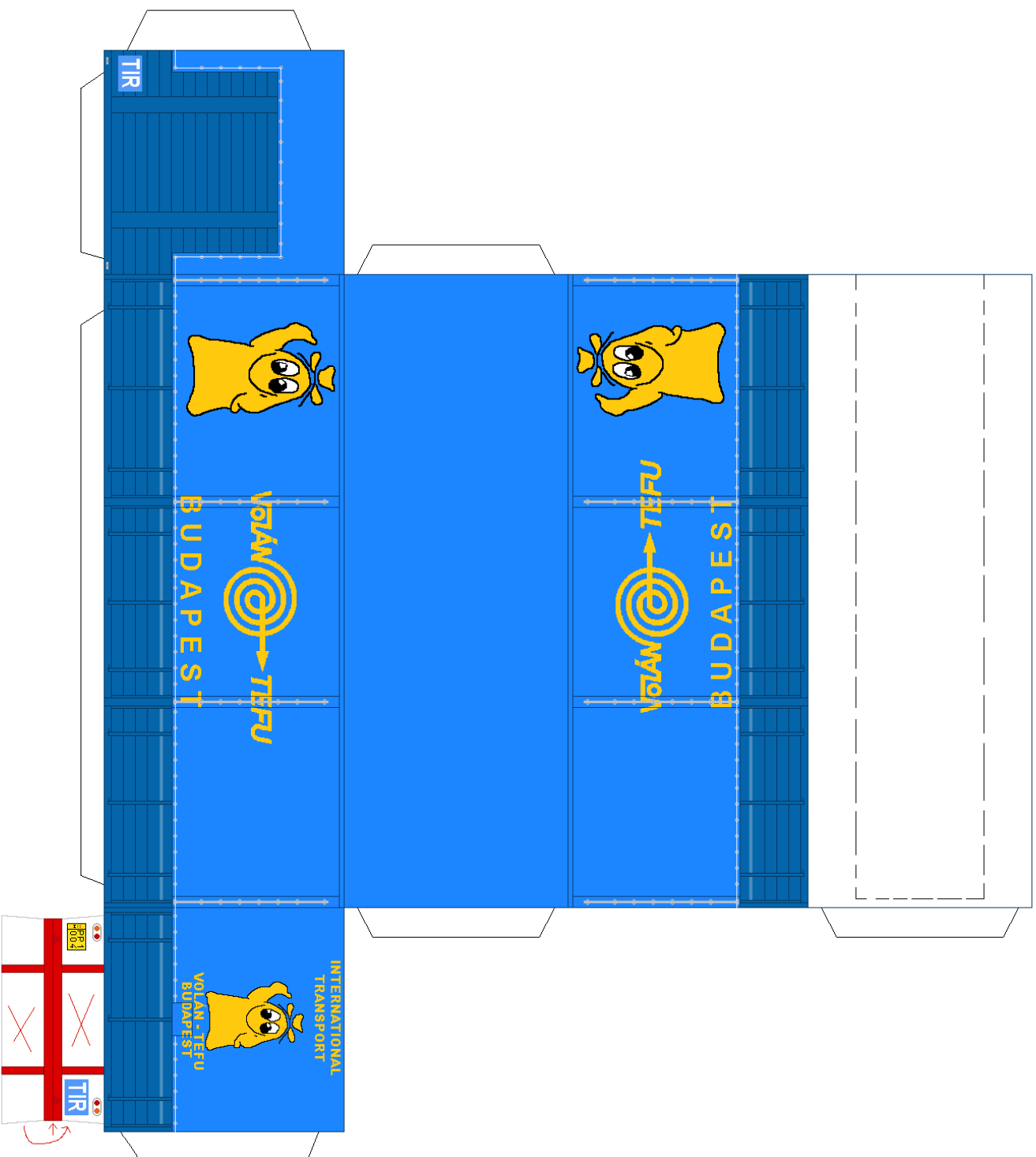


A hátsó tengely elöl



Az első kerek mögé a függőszámmal

Olvasd el a ragasztási tanácsokat is!



A nyíljal jelzett vonal mentén hajsd vissza az 8150 réstől az "X"-el jelölt réstől vágd ki!