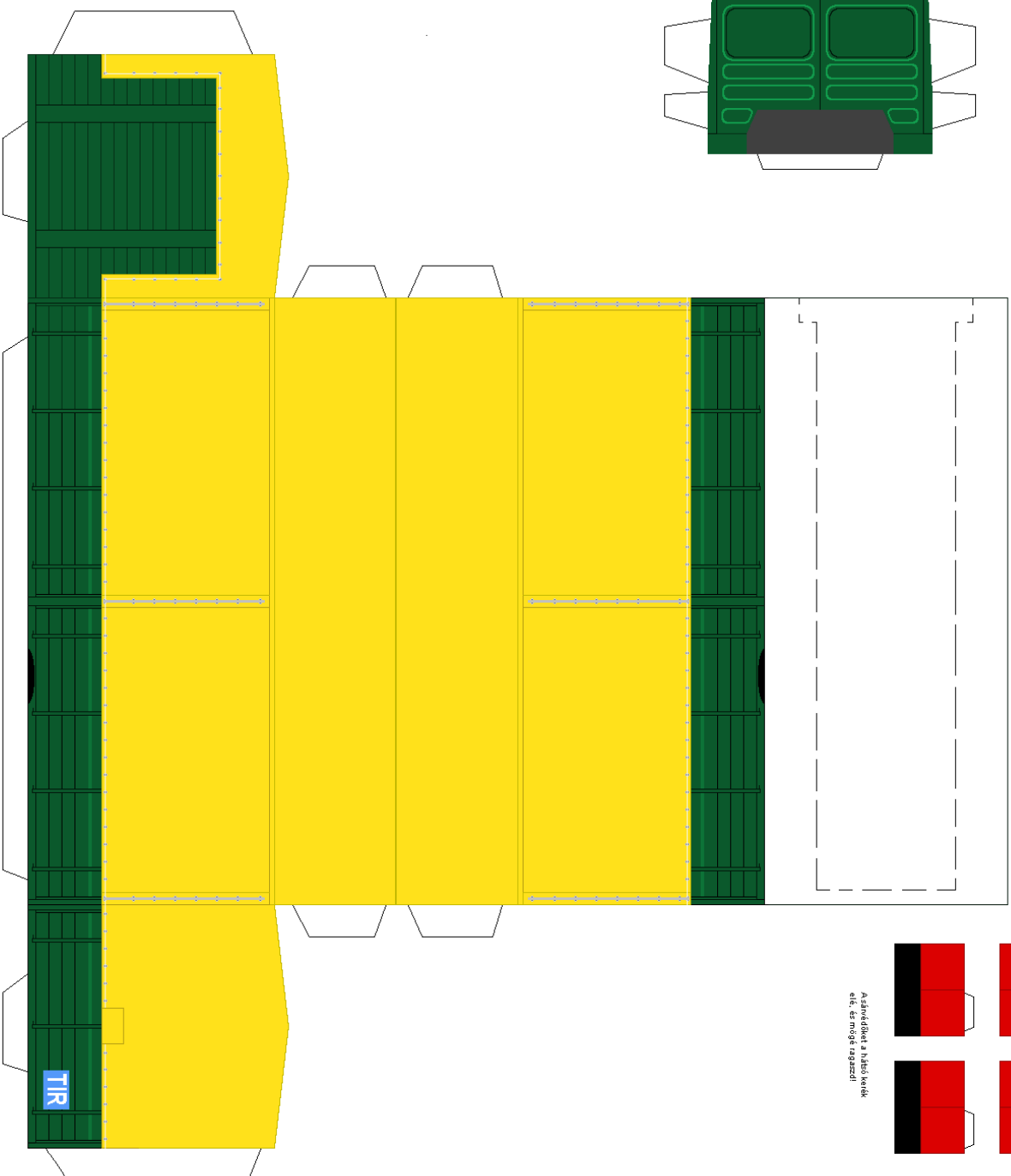
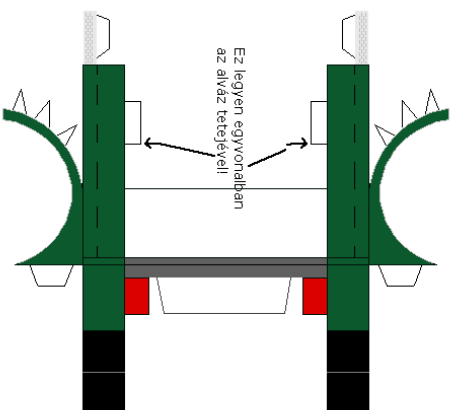
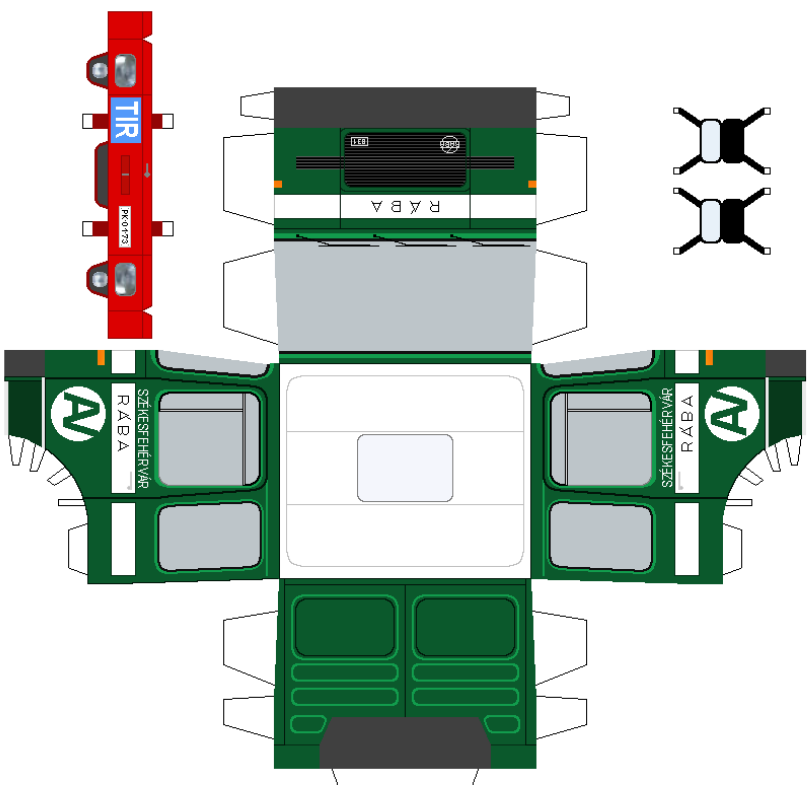
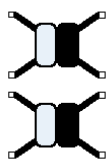
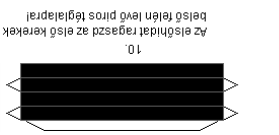
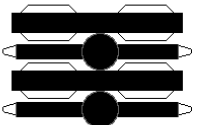


Olvasd el a ragasztási tanácsokat is!

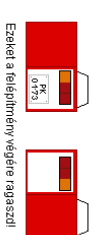
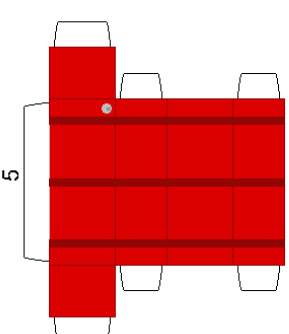
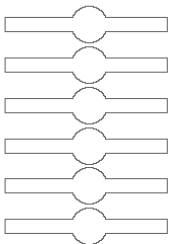




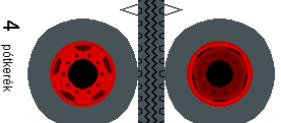
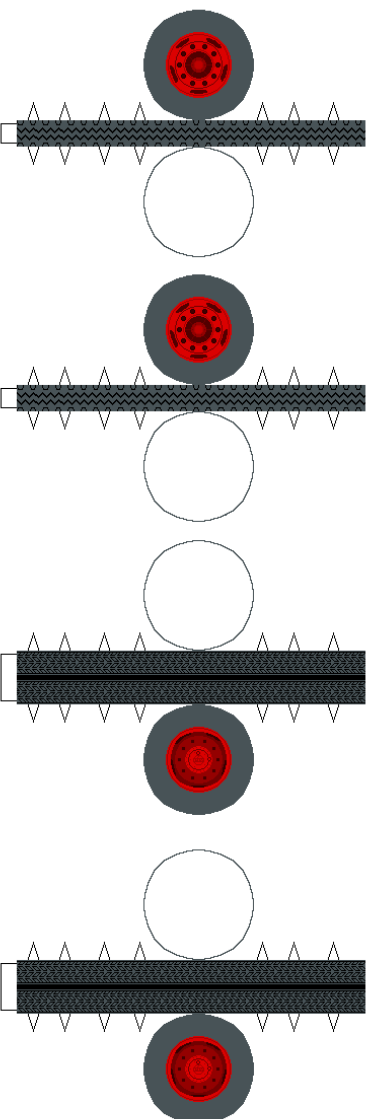
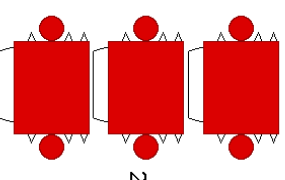
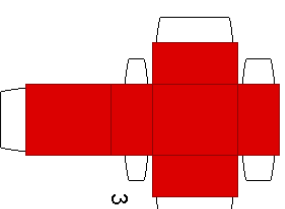
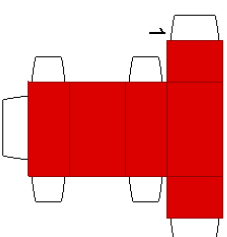
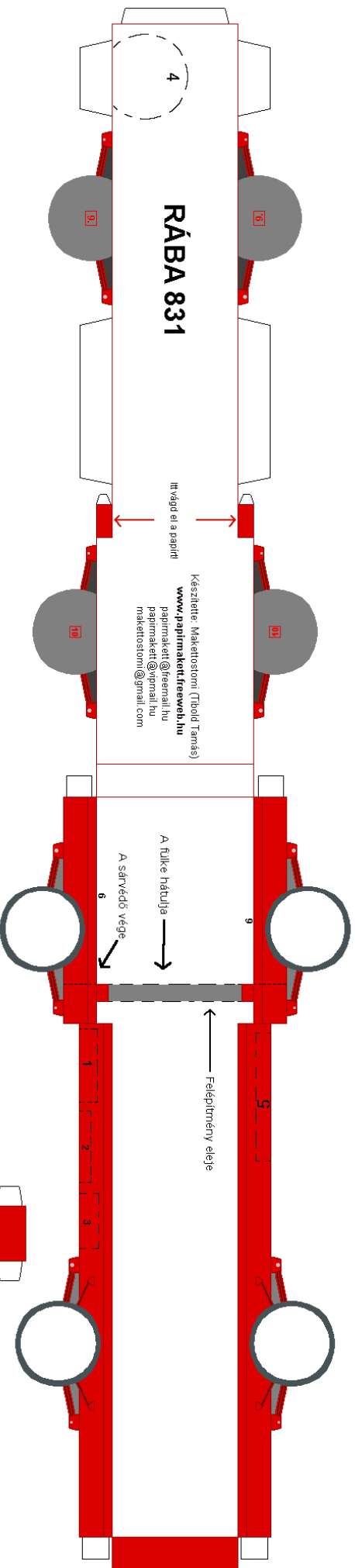
9. A hátsóhúkat ragaszd a kerékek belsejébe lévő piros keretrel



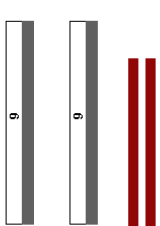
A hátsó hűtő felszerelhető az előző sablonból is, de ha az nem érdekel, akkor készítsd el a 10-es sablont, és ragaszd a hűtő mögött a piros keretrel, és ugyanúgy az eredményt kapod!



Ezket a felépítővégeket ragaszd!



Itten alakban ragaszd össze a felépítővégeket. Ezeket kösd össze őket, és ragaszd a 2-es helyre!



4. pótkerék