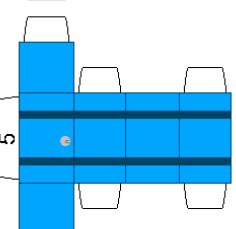
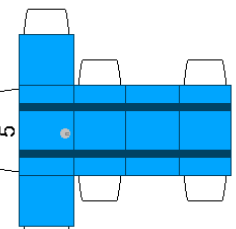
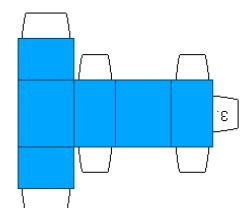
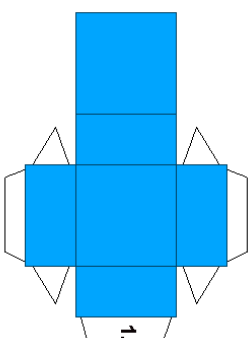
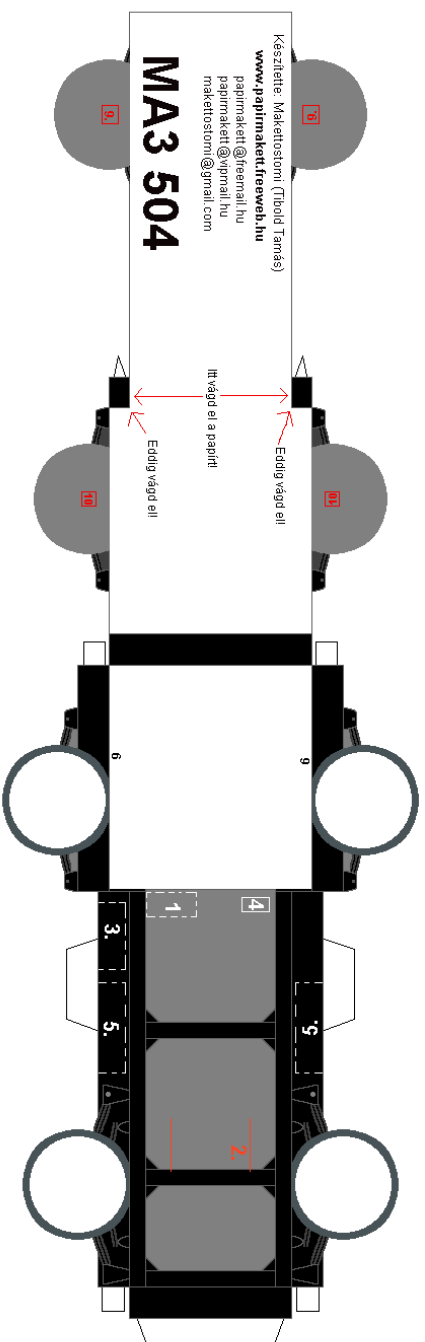
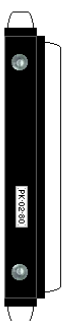
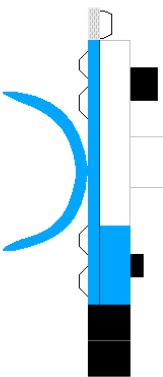
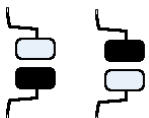
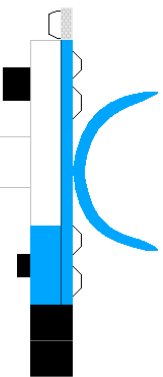
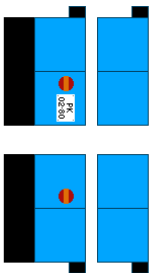
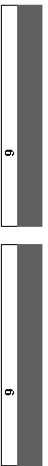


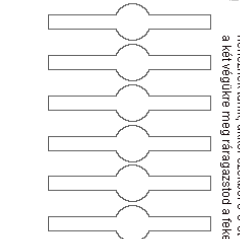
Olvasd el a ragasztási tanácsokat is!



10
Az elsőket ragaszd az első kerekre
belső felén levő piros téglalapra!

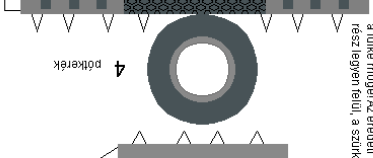
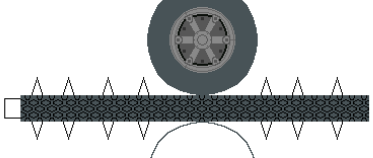
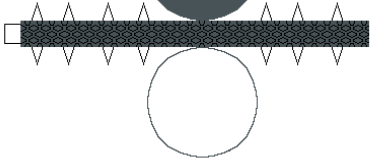
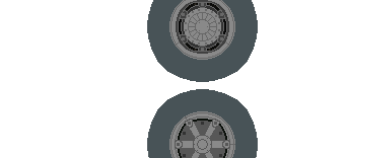
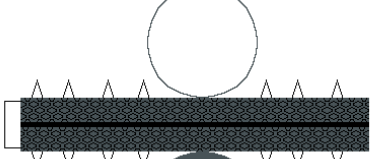
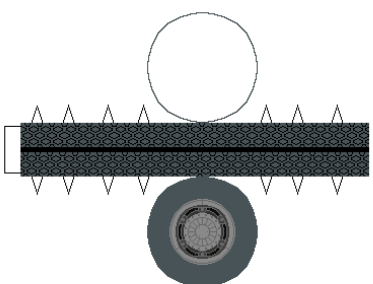


9
A hátsókat ragaszd a kerekre belső felén levő
piros keretrel. A differenciálmu jobb oldalra van eltolva!



A hátsó hídát összeragaszd az előző sablonból is, de ha az
nehéznek tűnik, akkor az előző G-rod összeragasztás lépésével
a két végükre meg ragaszd a felület részket, és ugyanígy az elsőhírnél kapod!

A többiket ragaszd jobb oldalra,
a fülke mögé! Az eredeti gumis színt
részlegyen feleül, a szíke alul!



4
Dőtkerek
Ez a felni belső felére kell!

