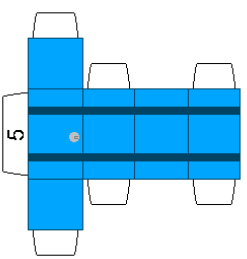
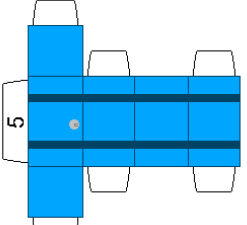
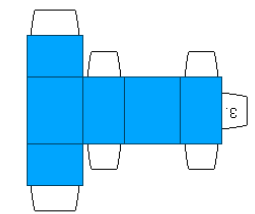
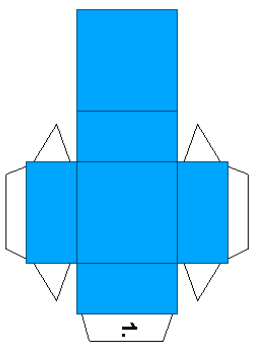
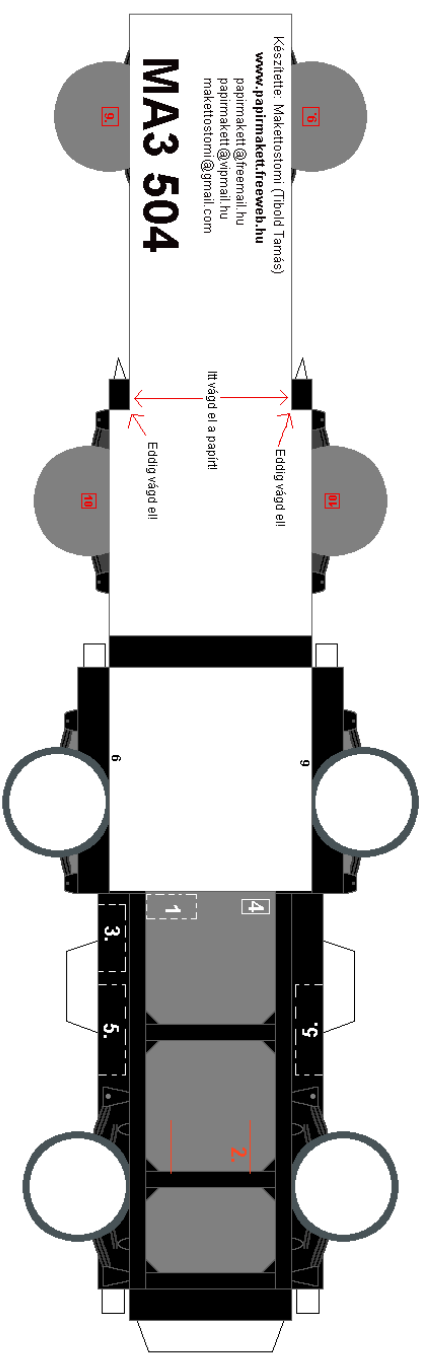
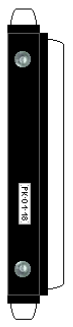
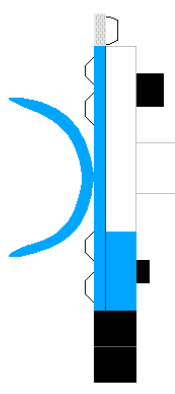
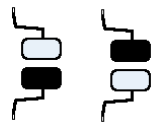
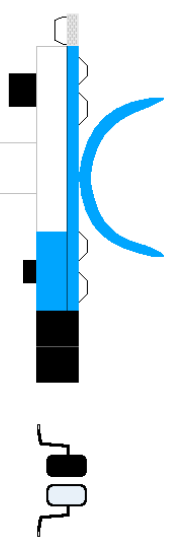
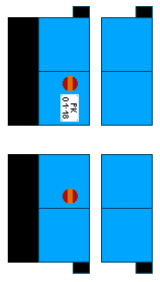
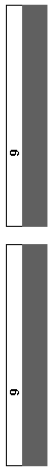


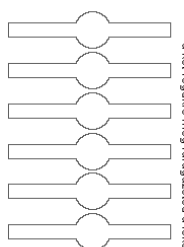
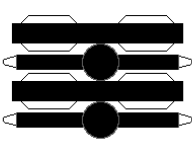
Olvasd el a ragasztási tanácsokat is!



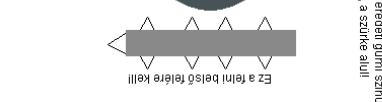
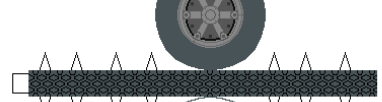
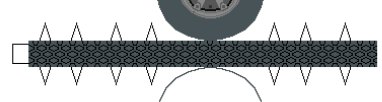
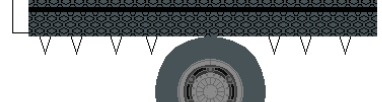
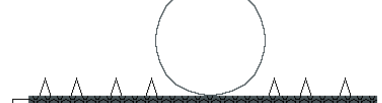
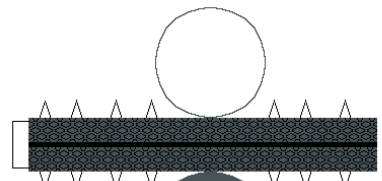
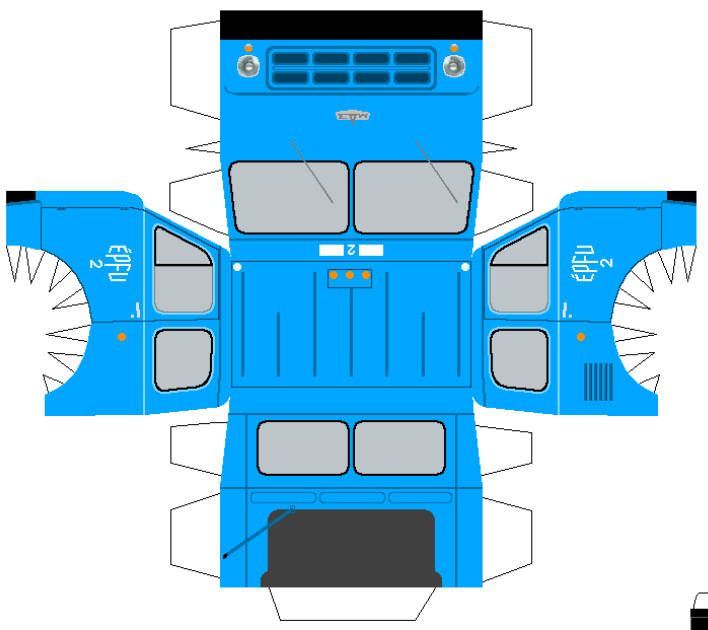
9  
A hátsóhidakat ragaszd a kerékek belső felére levő piros keretrel! A differenciálmű jobb oldalára van eltolva!

9  
A hátsó hídát összeragaszthatod az előző sablonból is, de ha az nem jön ki jól, akkor ezennél E-rod összeragasztászt érdemes használni! A két végükre meg ragaszd az a felület részket, és ugyanígy az elsőfémny kápot!

10  
Az elősínt ragaszd az első kerékre!  
belső felére ragaszd az első kerékre!



A többi keréket ragaszd jobb oldalára, a felére mögött! Az eredeti gumis színt használj! A szíke alul!



4  
Dőkerék

Ez a felhő belső felére kell!