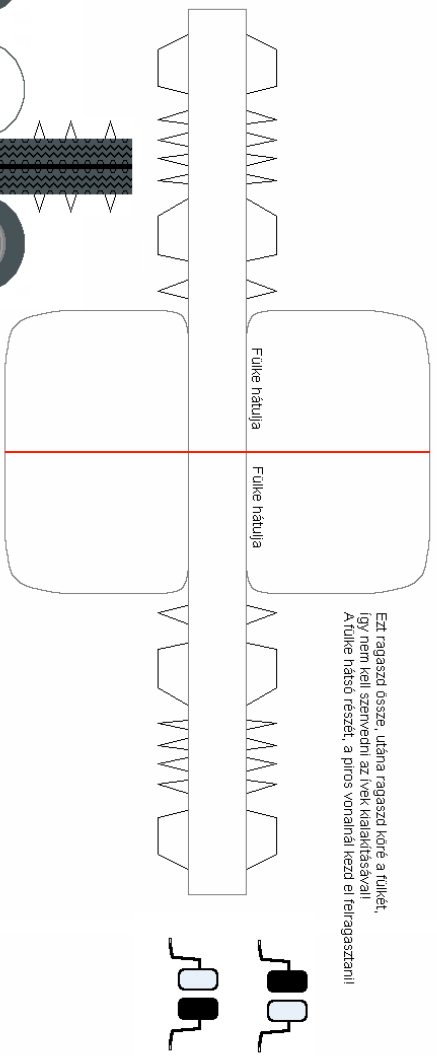
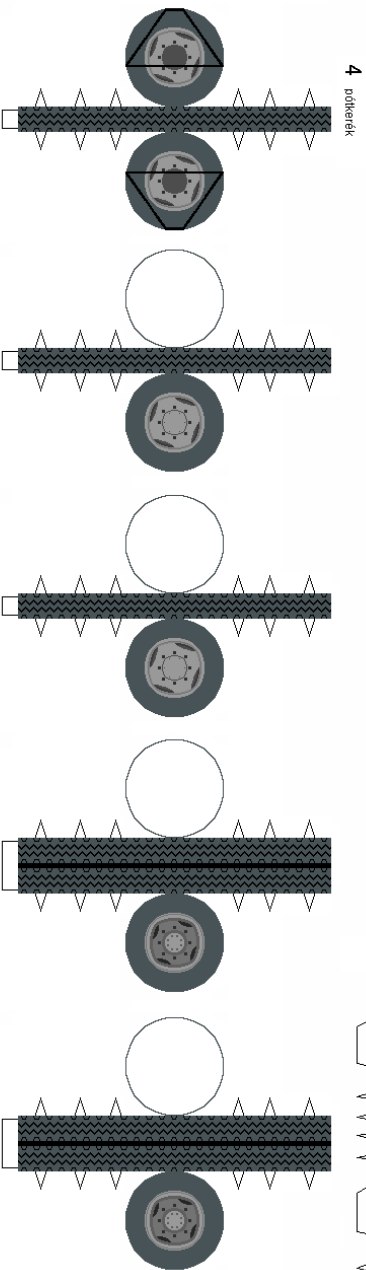
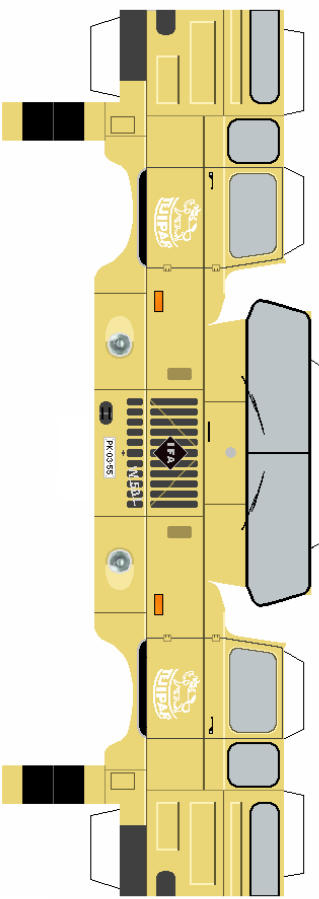
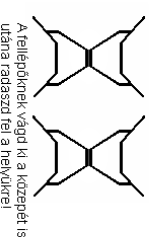
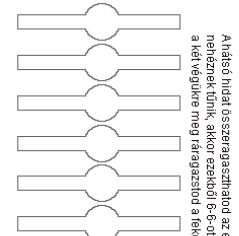
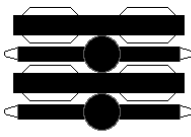
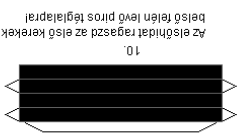
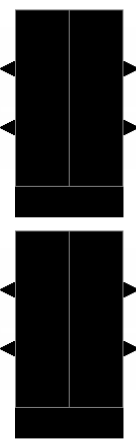
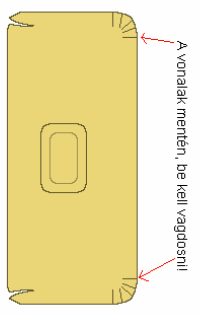
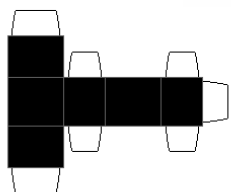
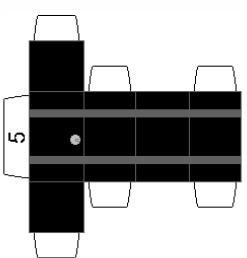
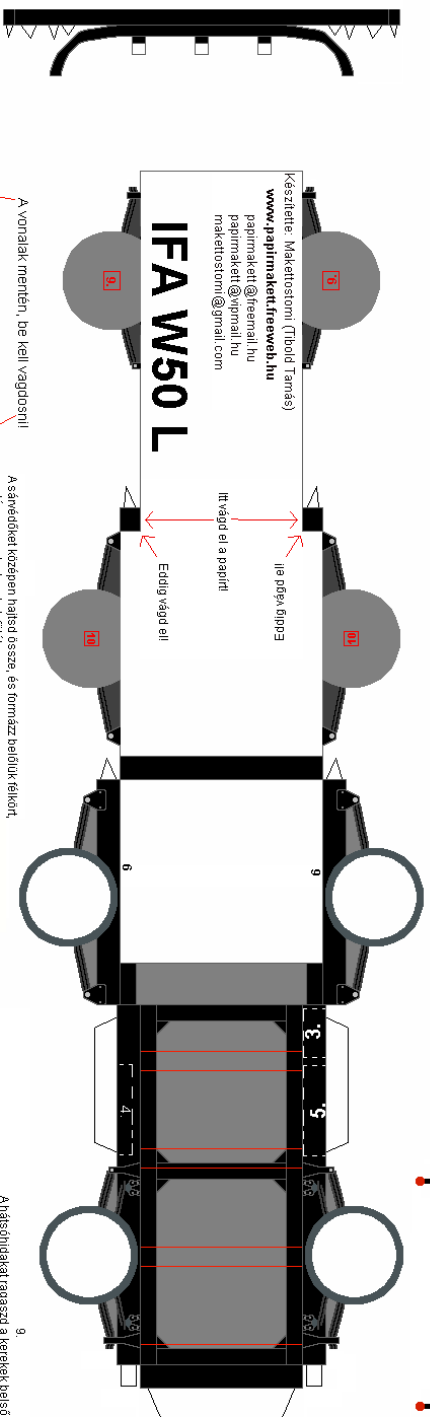
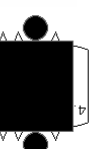
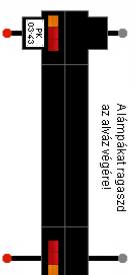
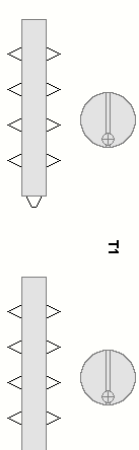


Olvasd el a ragasztási tanácsokat is!

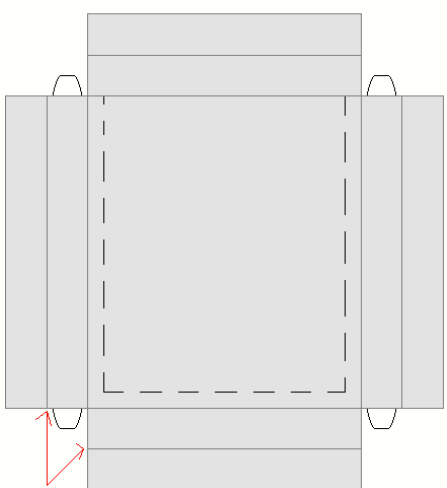


Ezt ragaszd össze, utána ragaszd köré a fülkét, így nem kell szervenni az ívek kialakításával. A fülke hátsó részét, a piros vonallal kezd el felragasztani!

Olvasd el a ragasztási tanácsokat is!

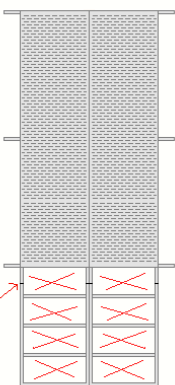


T1



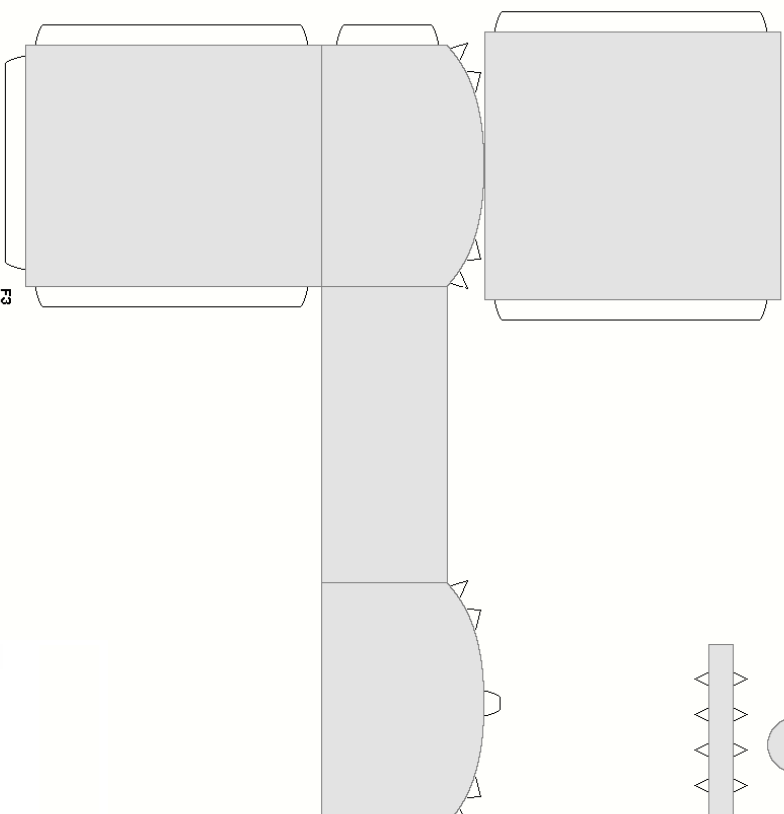
F2

itt hajlíd vissza 180°-ban!

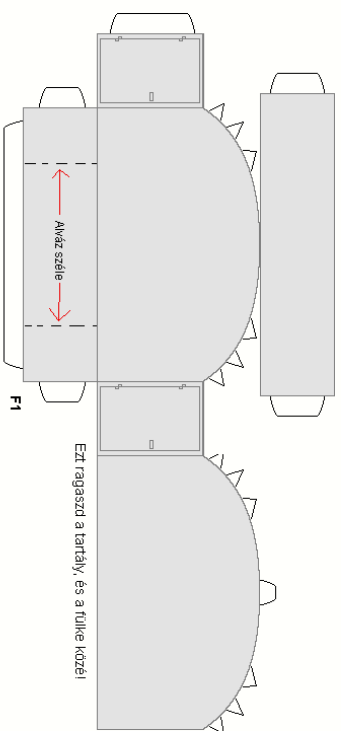


T2

itt hajlíd meg 90°-ban!

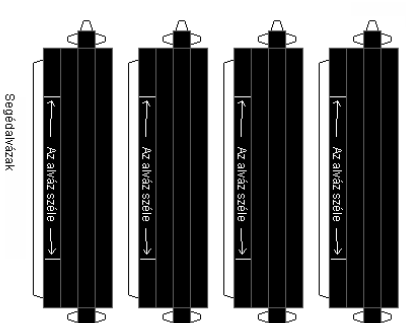


F3



F1

Ezt ragaszd a tartály, és a tulke közeli



Segédalkatrészek

F1-et ragaszd a tulke mögé a piros vonallal. Ragaszd felé a segédalkatrészeket a maradó, piros vonallal. Ragaszd felé az F2-t, F3-at ragaszd az F2 behajlított, a szárga pont vonalra, T1-eseket ragaszd az F3 lefelé jelzett helyre. T2-t ragaszd az F3 lefelé, a T1 bal oldalára. Aláírd a jelzett helyeken hajlít meg!