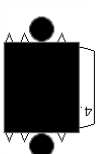
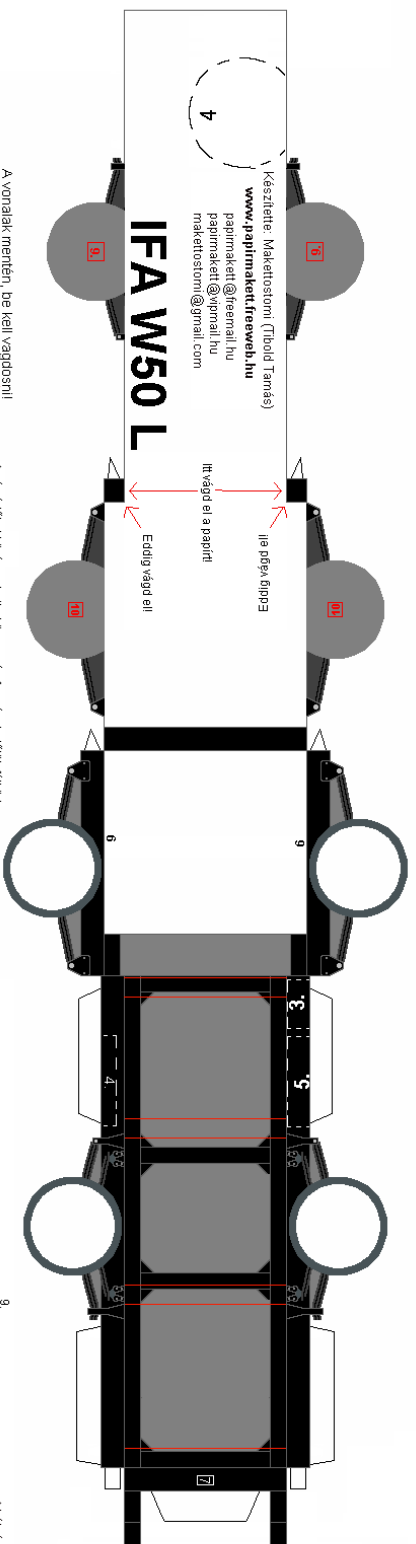


Olvasd el a ragasztási tanácsokat is!

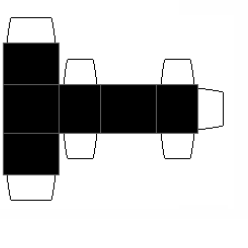
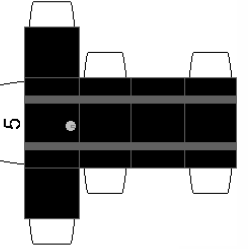
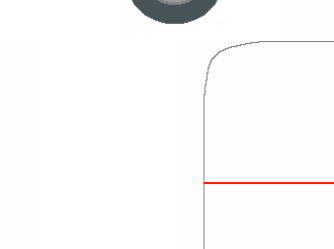
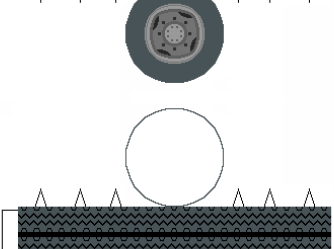
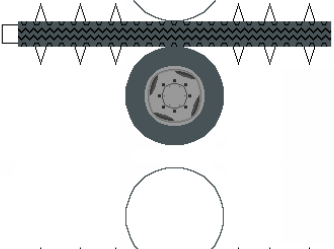
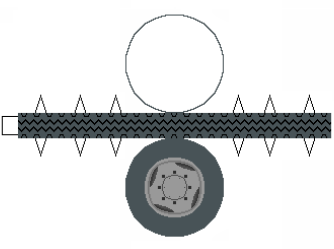
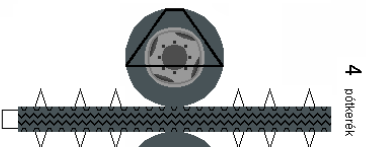
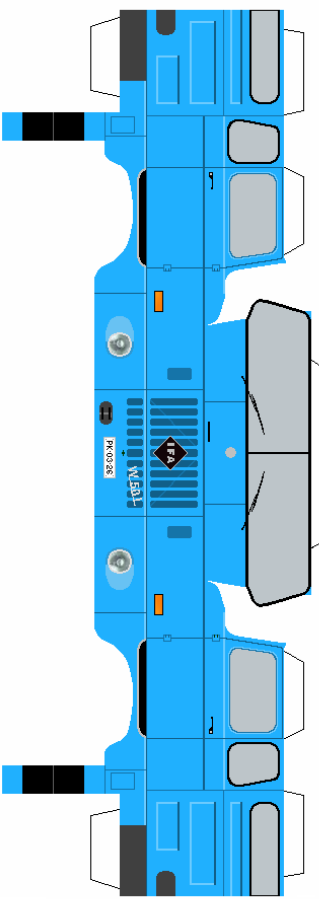
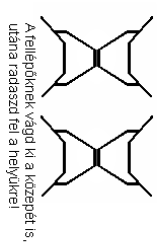
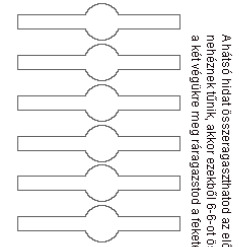
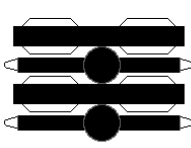
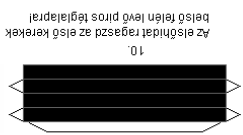


Avonofejlet a kijelölt helyre ragaszd!

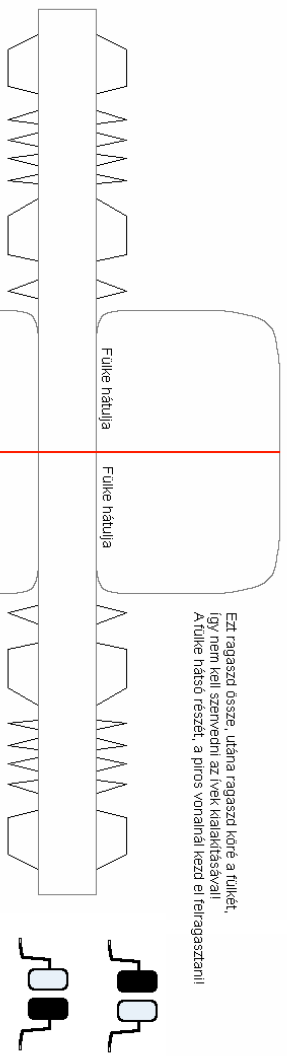


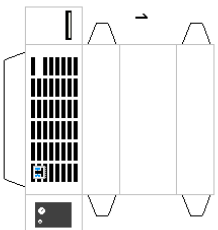
A vonalakat mentén, de kell vágdosni!

A sárvédőket közepén hajtsd össze, és formázz belőlük félköröket, ezután ragaszd a keretek fölé!



Ezt ragaszd össze, utána ragaszd köré a fülkét, így nem kell szerezni az ívek kialakításával. A fülke hátsó részét, a piros vonallal kezd el felragasztani!





A segédvázlatot ragaszd, az alvázon található,  
piros vonalakra!

