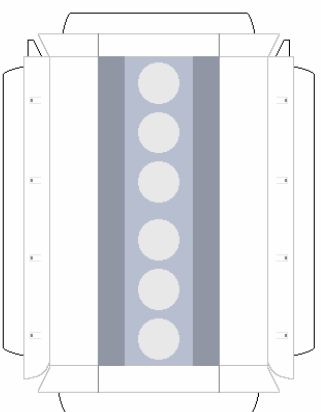
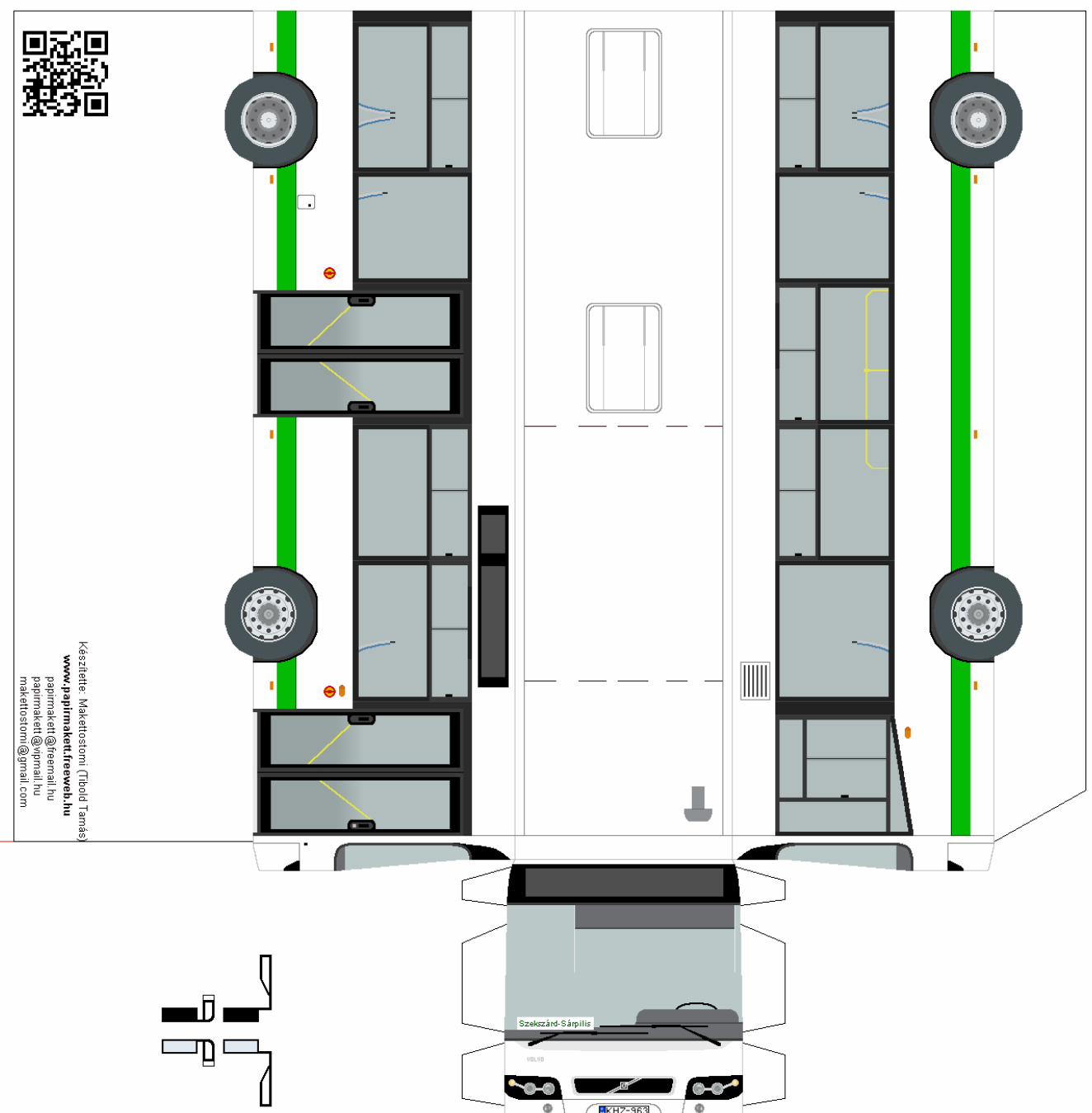


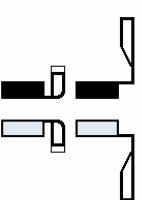
Olvasd el a ragasztási tanácsokat is!

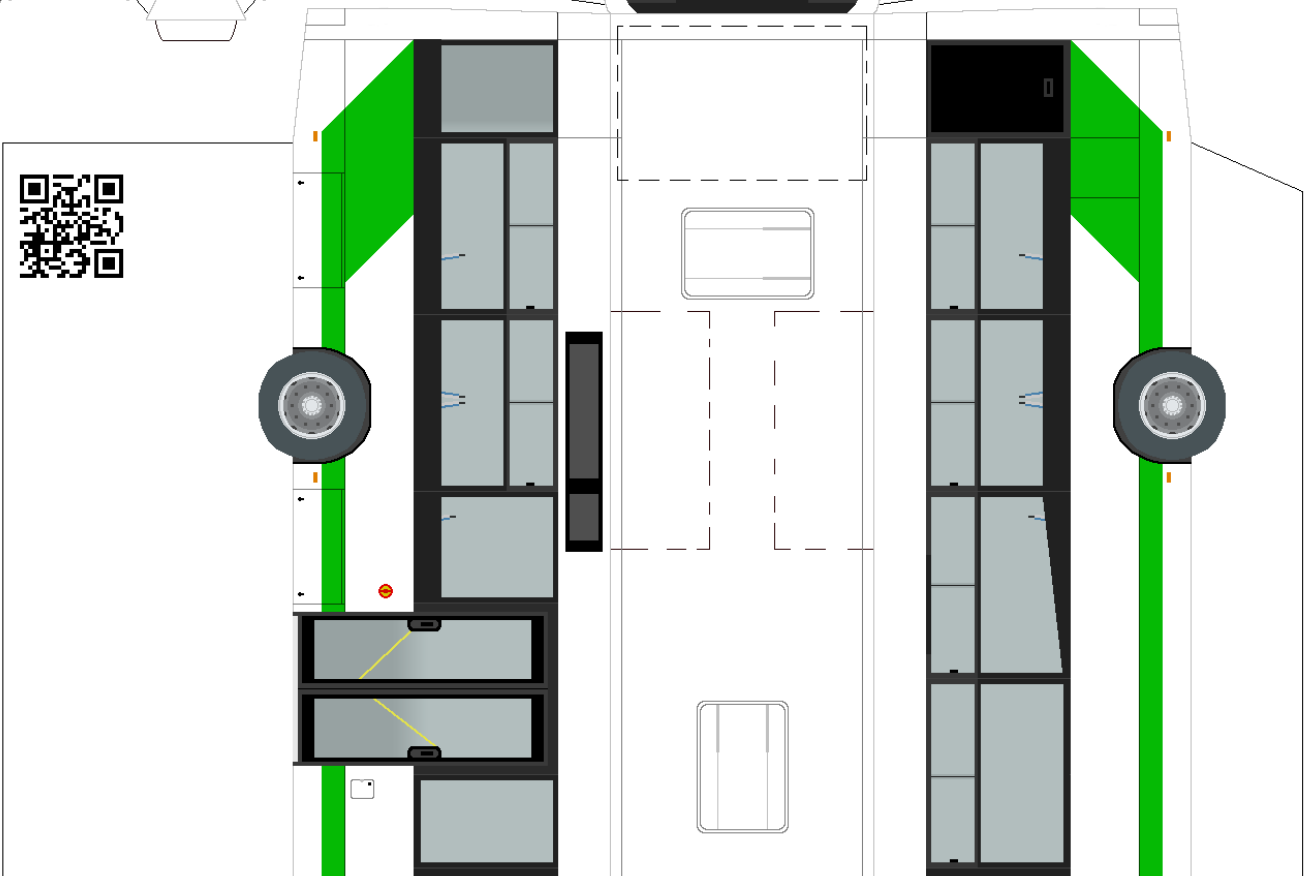
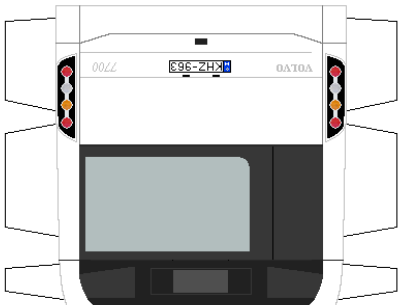
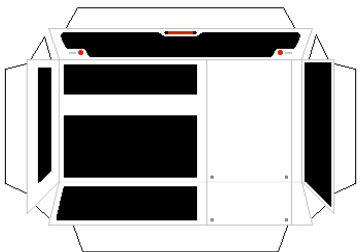


A felfordított rajzard a busz felsőjén levő kégalaprajz

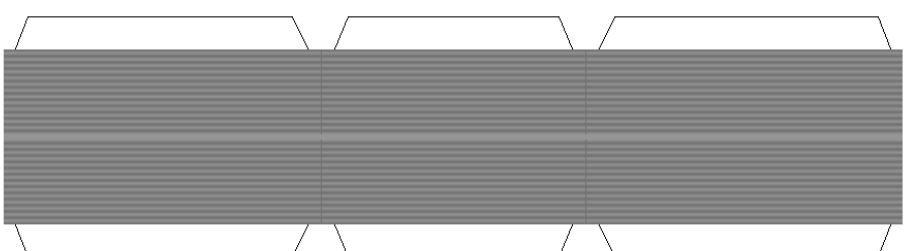
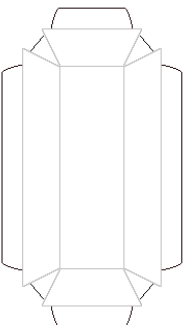
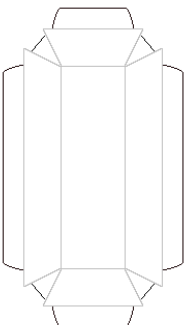


Készítette: Makkertostomi Tibold Tamás
www.papirmakkertofreweb.hu
papirmakkert@freemail.hu
papirmakkert@vipmail.hu
makkertostomi@gmail.com

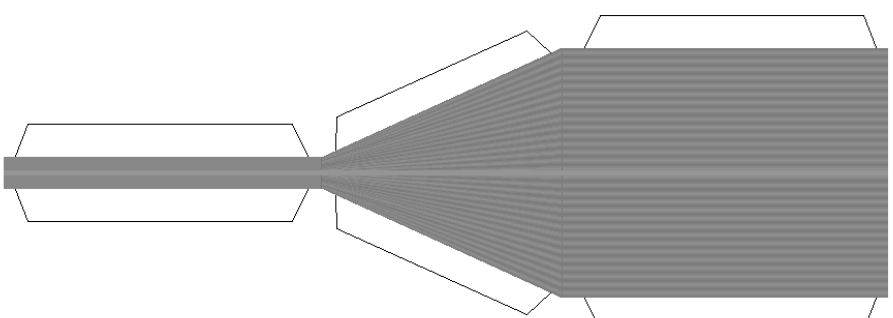




Ezzel ragaszd a busz tetőjét!



Ha ezzel rakod össze a buszt,
akkor egyenesen fog állni!



Ha ezzel rakod össze a buszt,
akkor úgy fog állni, mintha kenyérrel!