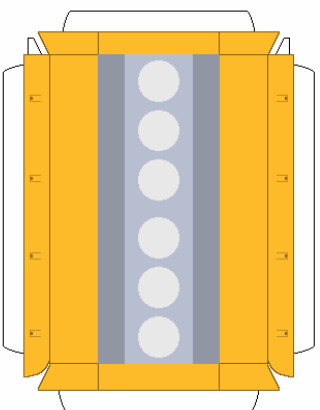
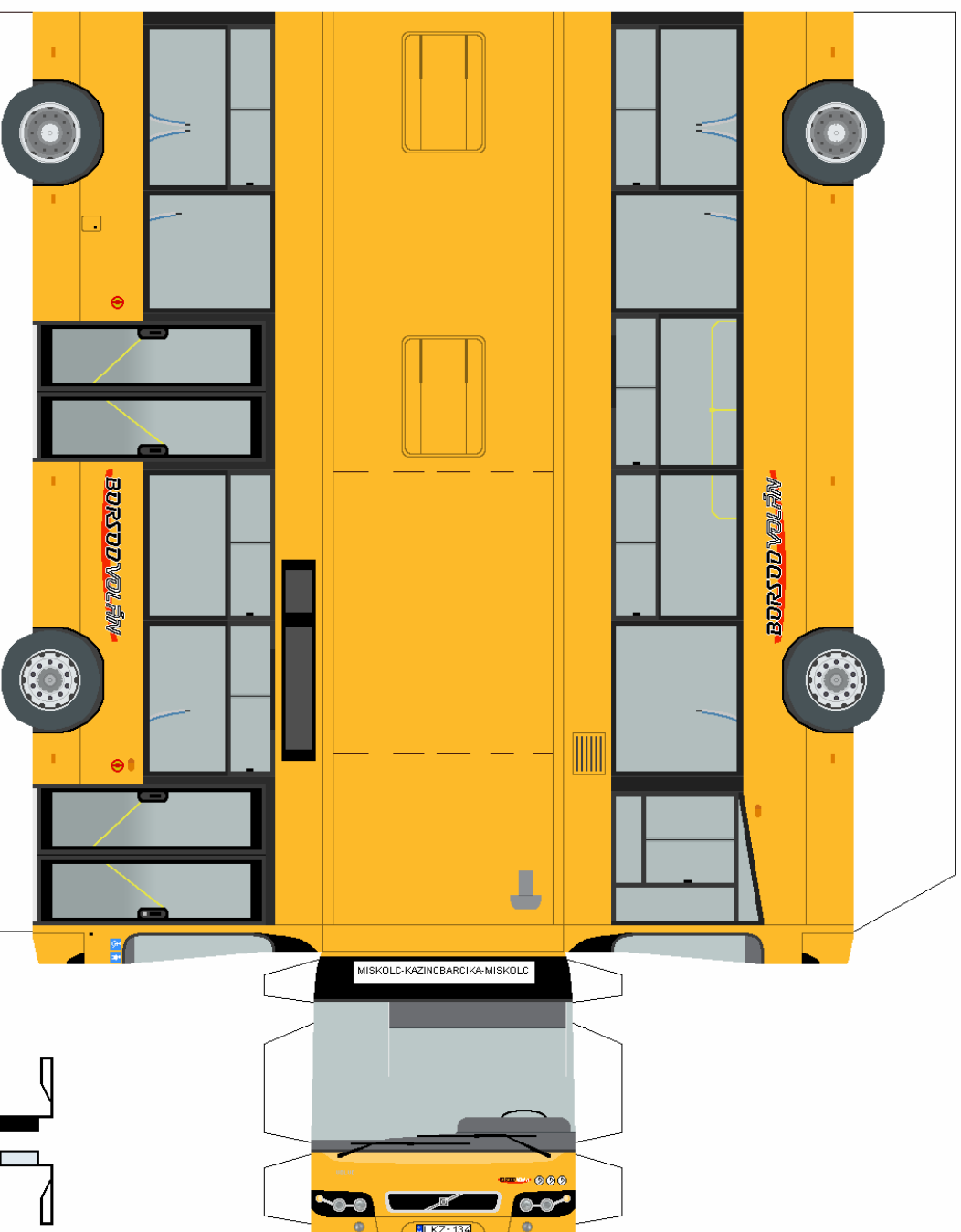


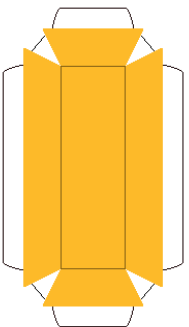
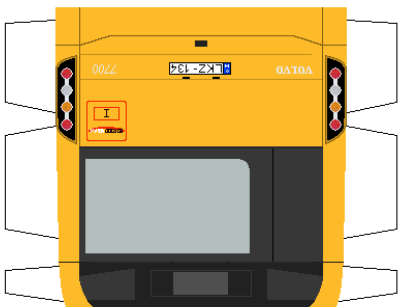
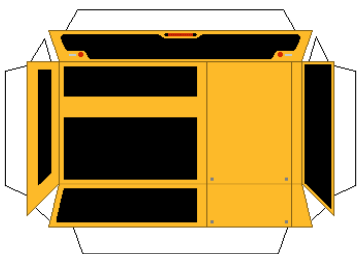
Olvasd el a ragasztási tanácsokat is!



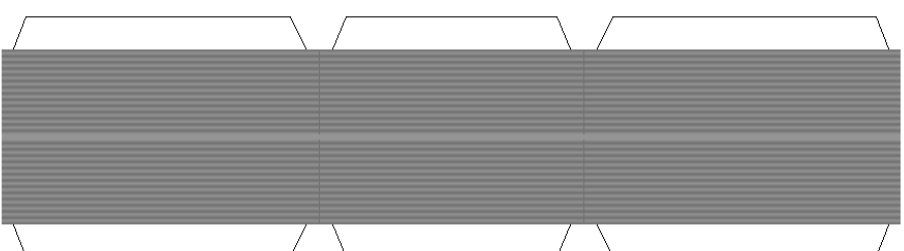
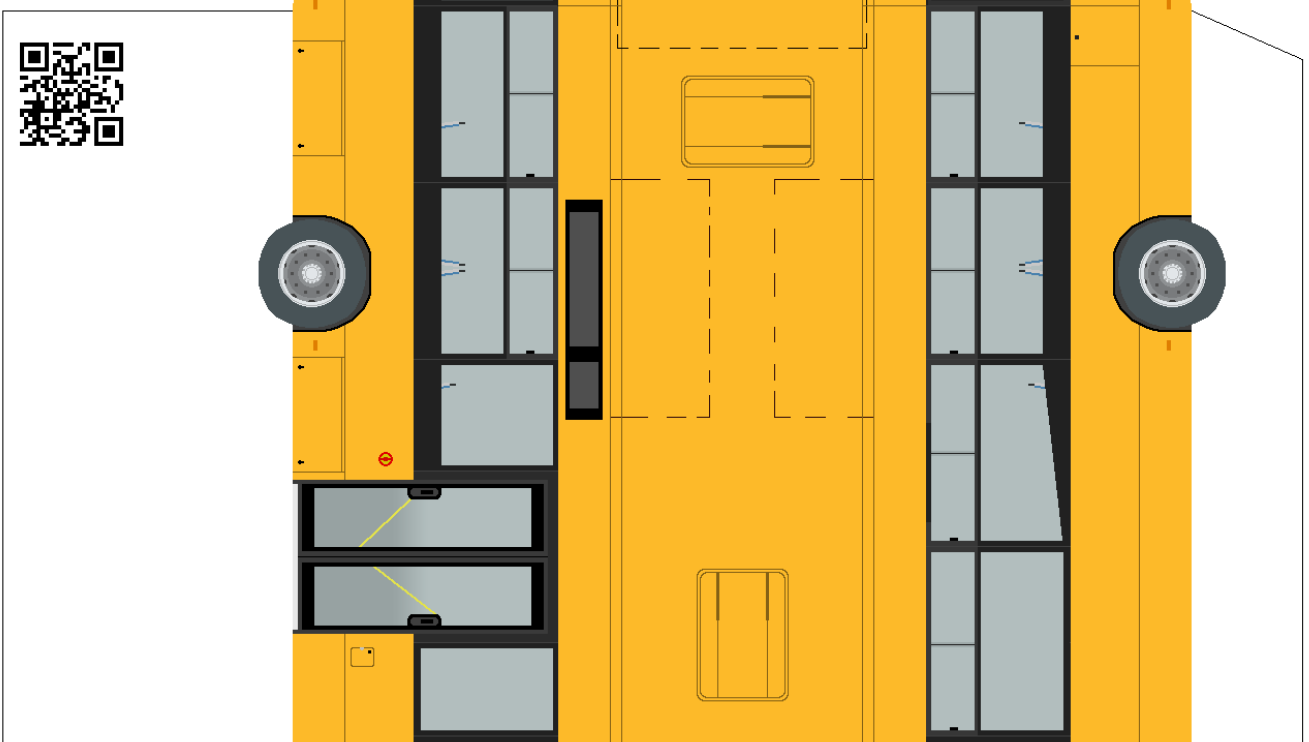
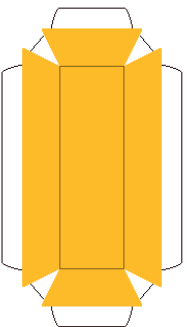
A legkönnyebben ragasd a busz tetelét a levő kéglaplóra!



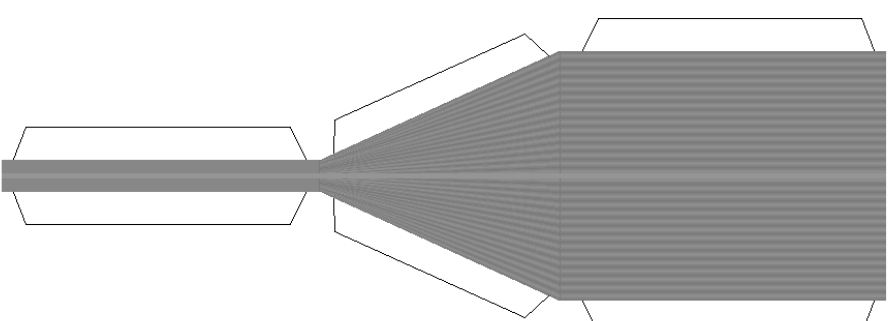
Készítette: Makkertostomi Tibold Tamás
www.papirmakkertofreweb.hu
papirmakkertofreweb@freemail.hu
papirmakkertofreweb@vipmail.hu
makkertostomi@gmail.com



Ezzel ragaszd a busz tetelét!



Ha ezzel rakod össze a buszt,
akkor egyenesen fog állni!



Ha ezzel rakod össze a buszt,
akkor úgy fog állni, mintha kenyérrel!